

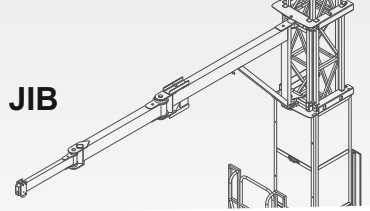


ARTICULATED JIB

This articulated arm crane, enables operators to load and lift **heavy pieces** weighing up to 750 kg for **construction and facade installations**.

Thanks to its design and capacity, the articulated arm **facilitates the lifting and precise positioning** of bulky and heavy objects, ensuring a safe and **efficient installation**.



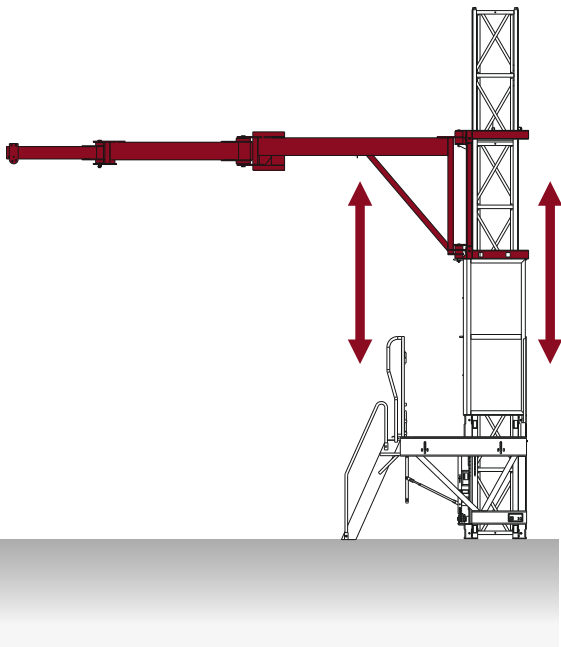
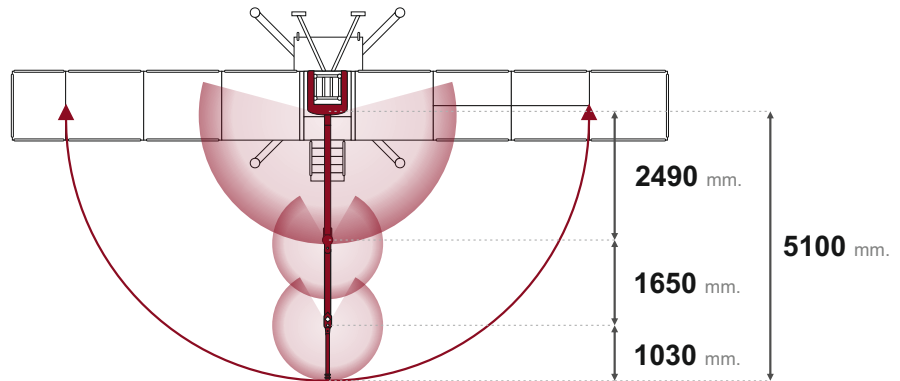


FLEXIBLE DESIGN

The articulated crane is an extremely versatile and **efficient tool for handling loads**. Thanks to its flexible design, it allows easy access to any point on the platform or facade, regardless of environmental challenges.

This maneuverability is due to its **articulated arm**, which can extend and retract with precision, facilitating the **exact positioning of the load**.

Its compact and robust structure makes it ideal for working in confined or hard-to-reach spaces, offering a **practical and secure solution**.



CRANE SYNCHRONIZED WITH PLATFORM MOVEMENT

The articulated arm, situated at top the mast cover, **moves in sync with the mast platform**, enhancing flexibility and reach during high-rise assembly operations.

This coordination improves **precision and safety**, enabling operators to control the load more effectively. Moreover, it optimizes efficiency and lowers the risk of accidents, leading to **increased productivity** on the job site.

This maneuverability and flexibility make it an indispensable tool in construction and logistics projects, **facilitating access to any point on the platform** or façade with **precision and efficiency**.



LOAD POINTS

The integration of this device with the **SAEclimber platform** not only improves the load capacity but also **optimizes the installation process**, allowing operators to work with greater comfort and safety.

In the **first section**, the crane can support up to **750 kg**, making it ideal for handling heavier and bulkier objects. In the **second section**, the load capacity is **500 kg**, providing a balance between reach and load capacity. Finally, in the **third section**, the crane can support up to **300 kg**, allowing it to reach farther points without compromising stability and safety.

