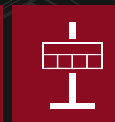
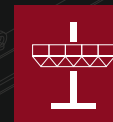




MASTCLIMBER TOP CRANE

The mast crane is an essential tool in construction and other industrial sectors, specifically designed to efficiently and safely lift materials from the ground to work platforms, as well as to move them from these platforms to the facades of buildings.

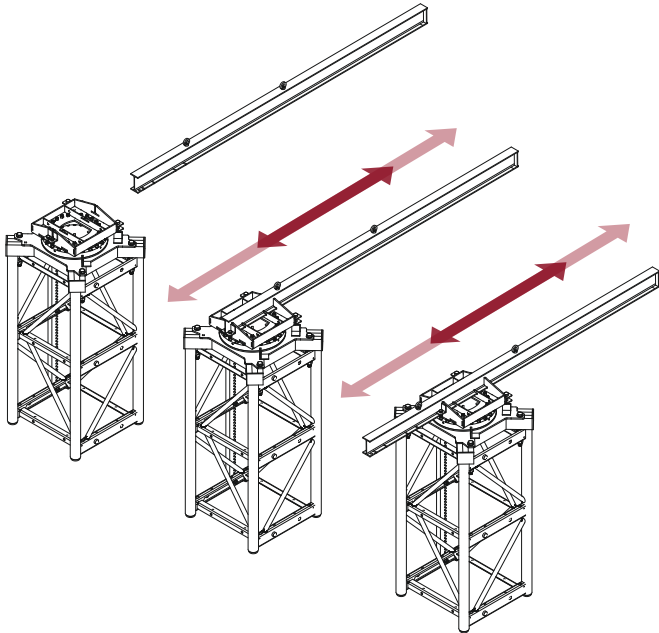
This crane is characterized by its robustness and capacity to handle heavy loads, making it an indispensable option for large-scale



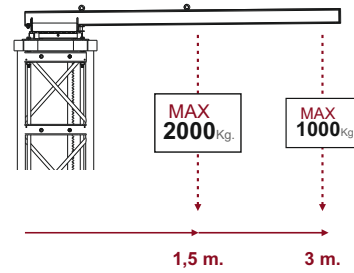


MODULAR AND ADAPTATIVE

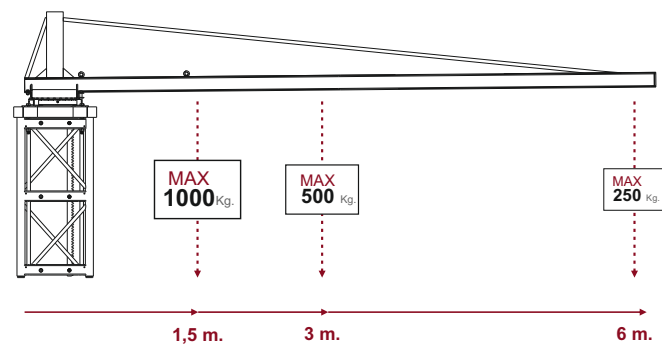
Depending on the type of crane, they allow for the lifting of heavier loads, adapting to the specific needs of each project. Thanks to its modular design, it can be adapted or removed, or length adjustment, to the project requirements.



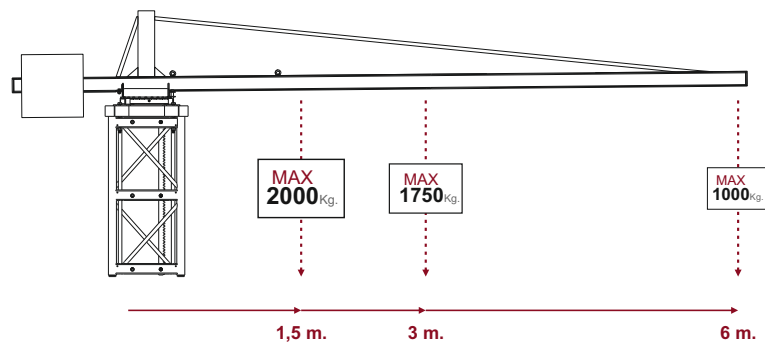
SHORT JIB



LONG JIB



COUNTERWEIGHT JIB



JIBS

3 OPTIONS

MODULAR
CRANE

MAST



YOUR PRODUCTIVITY BOOSTED

Full circular slewing is one of the best features of the SAEclimber Top Crane. It can lift materials to the platform or anywhere on the building. This awesome feature boosts productivity, it's no necessary down the machine for each material load and saving you money on material and handling costs.



QUICK AND SAFE INSTALLATION

SAEclimber mast sections, known for their strength and durability, allow for quick and safe installation, ensuring that the mast crane can operate at considerable heights and under demanding conditions.



SAFETY AND STABLE

The modular mast sections, makes a greater stability to the crane, minimizing the risk of accidents and improving workplace safety. This is especially important in heavy duty construction projects, where safety and precision in material handling are crucial. In summary, the mast crane not only facilitates the vertical transportation of materials but also offers advanced configuration options that enhance its performance and safety.